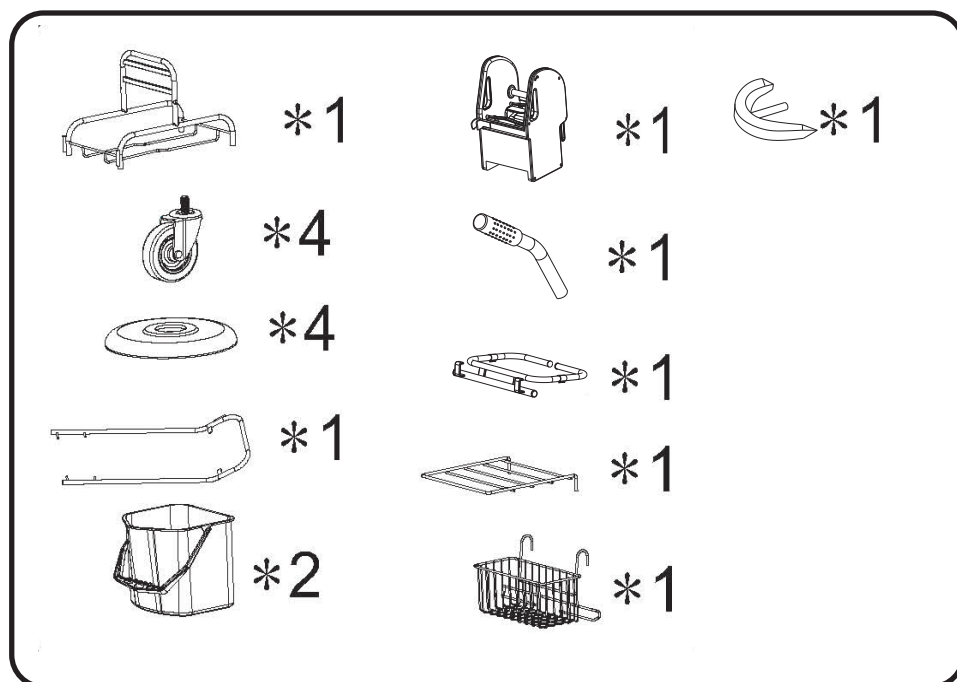
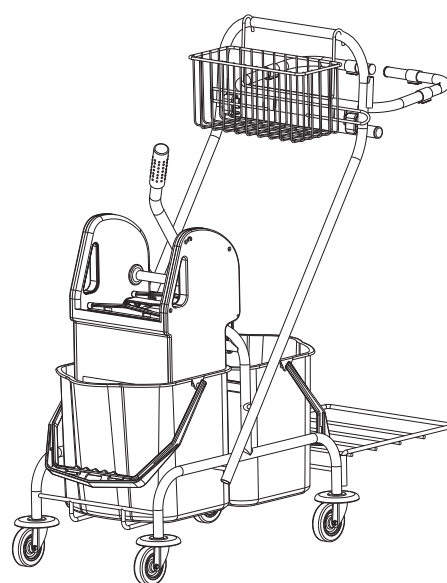
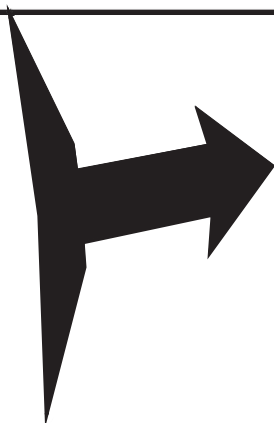
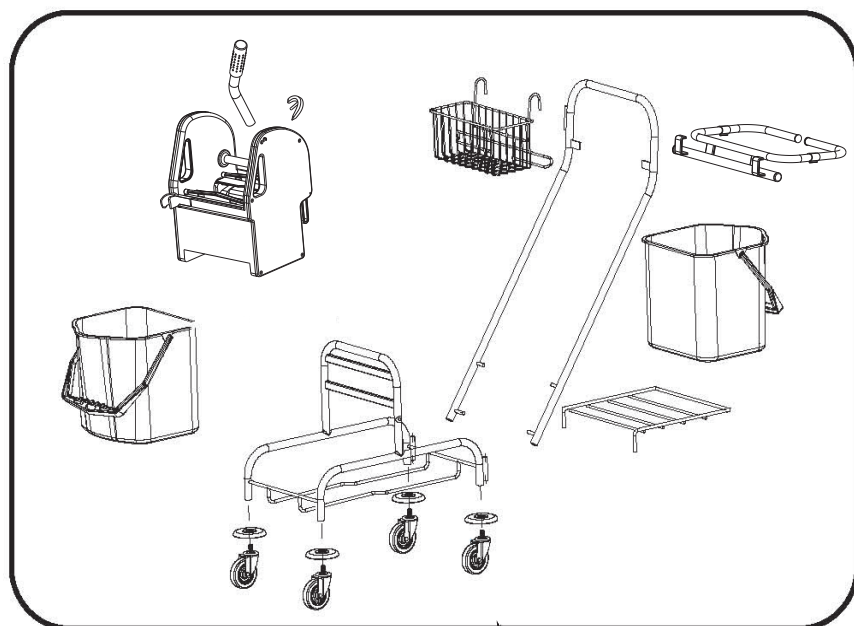
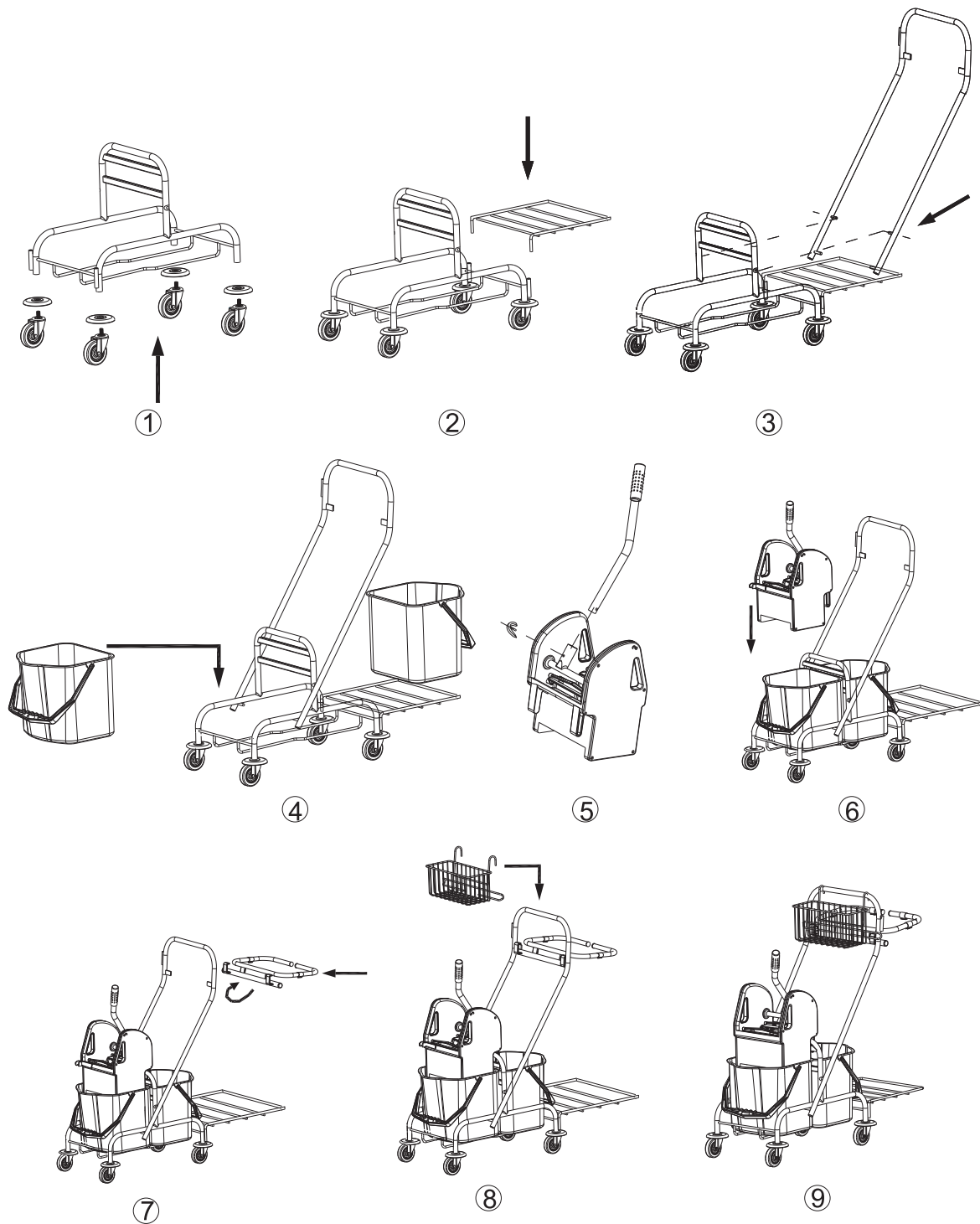


AF08087 Multifunction





Safety regulations and instructions

- ① Check all parts for possible loose. Make sure all parts are fastened well before using.
- ② Check the lock pin and rubber sleeve of the handle. And fasten them if they are loose.
- ③ To avoid danger or harm, operator should stand right in front of the trolley. Put mop head in the wringer and press handle downward to squeeze water out of the mop.

NOTE: Appropriate strength should be taken to press the handle. It is ideal to squeeze out the 80% water of the mop. Do not overexert while pressing the handle.